



Old Kent Road, SE1 | £2,200 Per Calendar Month

02087029666

peckham@pedderproperty.com

pedder
We live local

In General

- Modern new build apartment
- Two bedrooms
- Two private balconies
- Part furnished
- Bike storage
- Available now
- EPC: B

In Detail

Beautifully-presented, modern two bedroom apartment in this luxury development ideally located for excellent transport links.

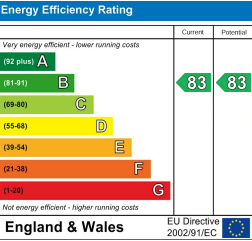
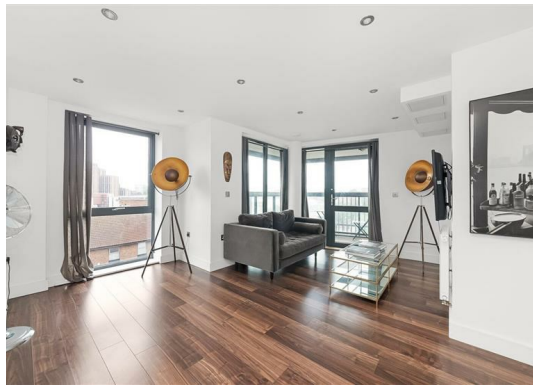
The property boasts a spacious open plan kitchen-reception with two private balconies that flood the space with natural light. There are two comfortable and bright bedrooms with convenient storage solutions and a contemporary bathroom suite.

With the popular Burgess Park only a short walk away, residents benefit from a beautiful green space on their doorstep. Additional benefits include access to a communal roof terrace and gardens.

Conveniently located on Old Kent Road, there is easy access to London Bridge and Clapham Junction with both South Bermondsey and Queens Road Stations nearby.

Please contact the Peckham Office today to arrange a viewing.

EPC: B | Council Tax Band: D | Part Furnished | Available now | HD: £507.69 | SD: £2,538.46



Pedder Property Ltd trading as Pedder for themselves and for the vendor/landlord of this property whose agents they are, give notice that (1) these particulars do not constitute any part of an offer or contract, (2) all statements contained within these particulars are made without responsibility on the part of Pedder or the vendor/landlord, (3) whilst made in good faith, none of the statements contained within these particulars are to be relied upon as a statement of representation or fact, (4) any intending purchaser/tenant must satisfy him/herself by inspection or otherwise as to the correctness of each of the statements contained within these particulars, (5) the vendor/landlord does not make or give either Pedder or any person in their employment any authority to make or give representation or warranty whatsoever in relation to this property.

